

FASTEST GOOGLE SMART TV (ANDROID 14)

Benchmarking the fastest Google Smart TV (Android 14).

By Techarc

techarcTM

Executive Summary

The Indian Smart TV market has a transformative era of techflation and premiumization. In 2025, the sector reached a critical inflection point with estimated sales of 11.5–12.5 million units. This growth is projected to continue, with Techarc forecasting sales to reach 12–13 million units in 2026.

As consumers increasingly prioritize speed and fluidity, the demand for high-performance hardware running the latest Android 14 (Google TV) has become the primary market driver. To identify the leader in this competitive landscape, Techarc conducted a comprehensive performance benchmarking study across 24 brands and 51 smart TV models. The evaluation focused on real-world responsiveness across four key pillars: Boot Up Time, App Loading (OTT), App Installation, and UI Navigation (Scrolling).

Key Findings (Concise):

Fastest Brand: Lumio emerged as the fastest Google Smart TV, leading across all tested metrics.

Top Performance: Lumio achieved a 32s boot-up time, 12s Netflix launch, and the fastest Plex installation at 29s.

Network Excellence: Delivered 86 Mbps connection speed and 0% frame drops in 4K HDR playback.

Superior Fluidity: Android 14 integration enabled UI scrolling faster than the average competitor.

Overall, the study validates Lumio as the fastest and most responsive Google Smart TV in India.

Google Smart TV (Android 14)

Google Smart TV on Android 14 marks a major upgrade in the smart TV ecosystem, prioritizing speed, fluidity, and user experience alongside display quality. Unlike the older, app-centric Android TV interface, Google TV offers a content-first layout with unified recommendations, watchlists, and apps.

With Android 14, it delivers smoother UI performance, faster app launches, better memory management, and smarter AI-based personalization. It also enhances integration with Google Assistant, Chromecast, and multi-profile features—making it a clear advancement over previous Android 9/10/11 TVs in both usability and responsiveness.

Types of Google TV with Android

Official Google-Licensed Android TVs

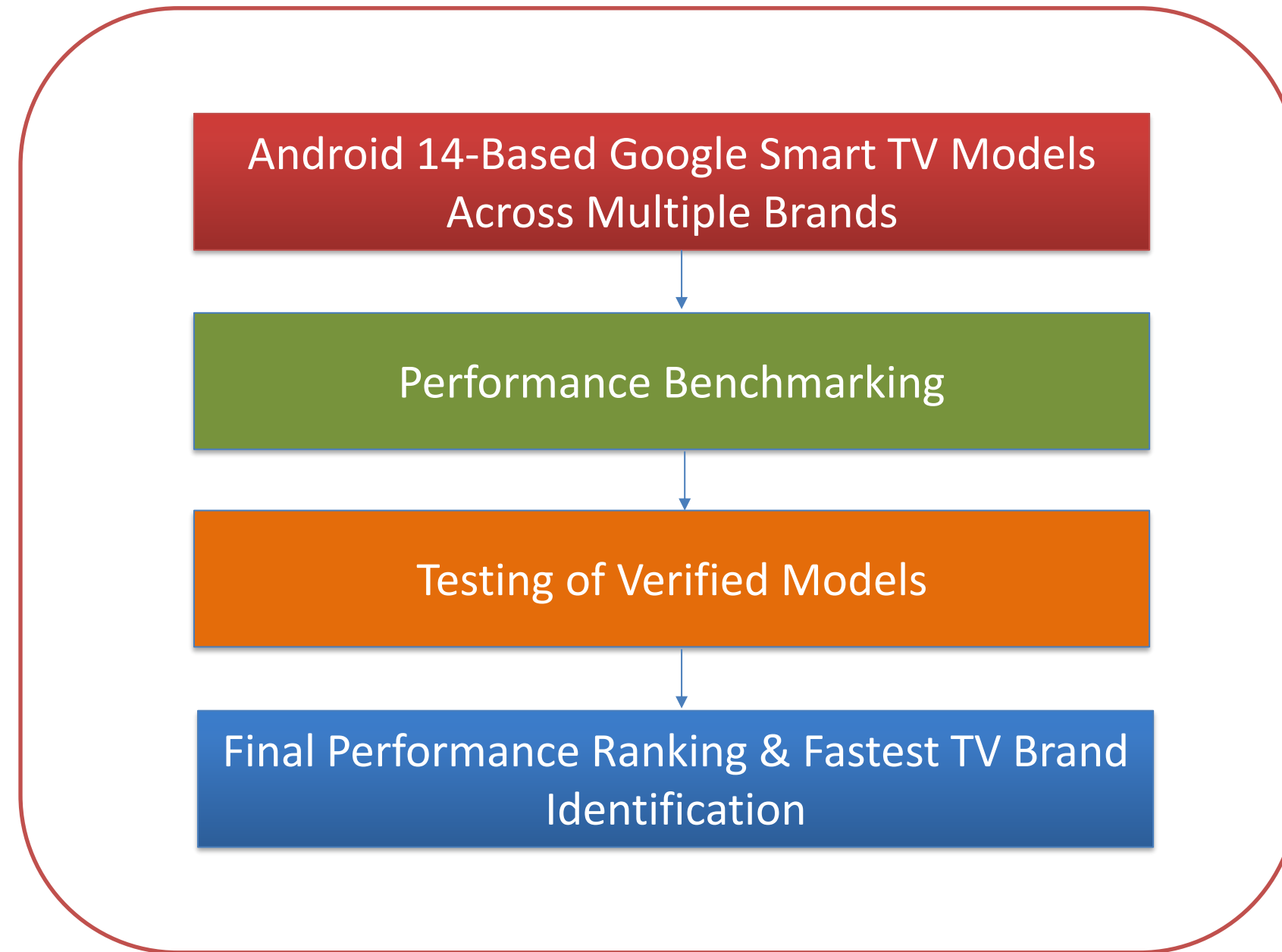
- Full Google TV UI
- Official Google Play Store
- Chromecast & Assistant built in
- Guaranteed updates & highest optimization
- Best overall performance and stability

Google Certified Android TVs

- Runs Android
- Google-approved
- Play Store and Chromecast included
- Slower UI, app-first interface
- Not as smooth or advanced as Google TV

For reliable and consistent performance evaluation, we selected only Official Google-Licensed Android 14 televisions, as these models meet Google's official standards for software, optimization, and user experience.

Framework

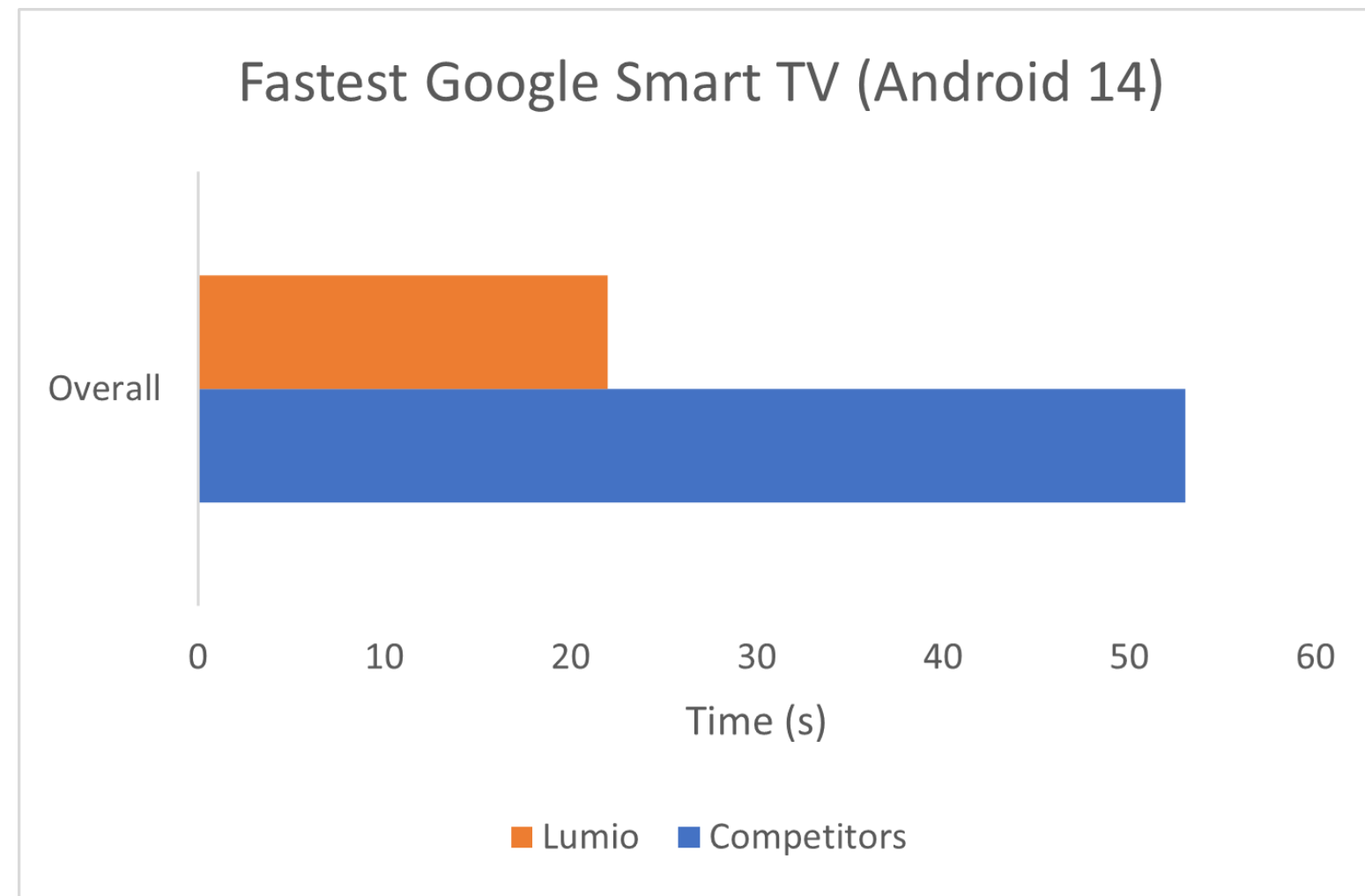


Benchmarking Fastest Smart TV

In line with changing user Experience, Techarc used the following approach to find the fastest google smart tv brand.

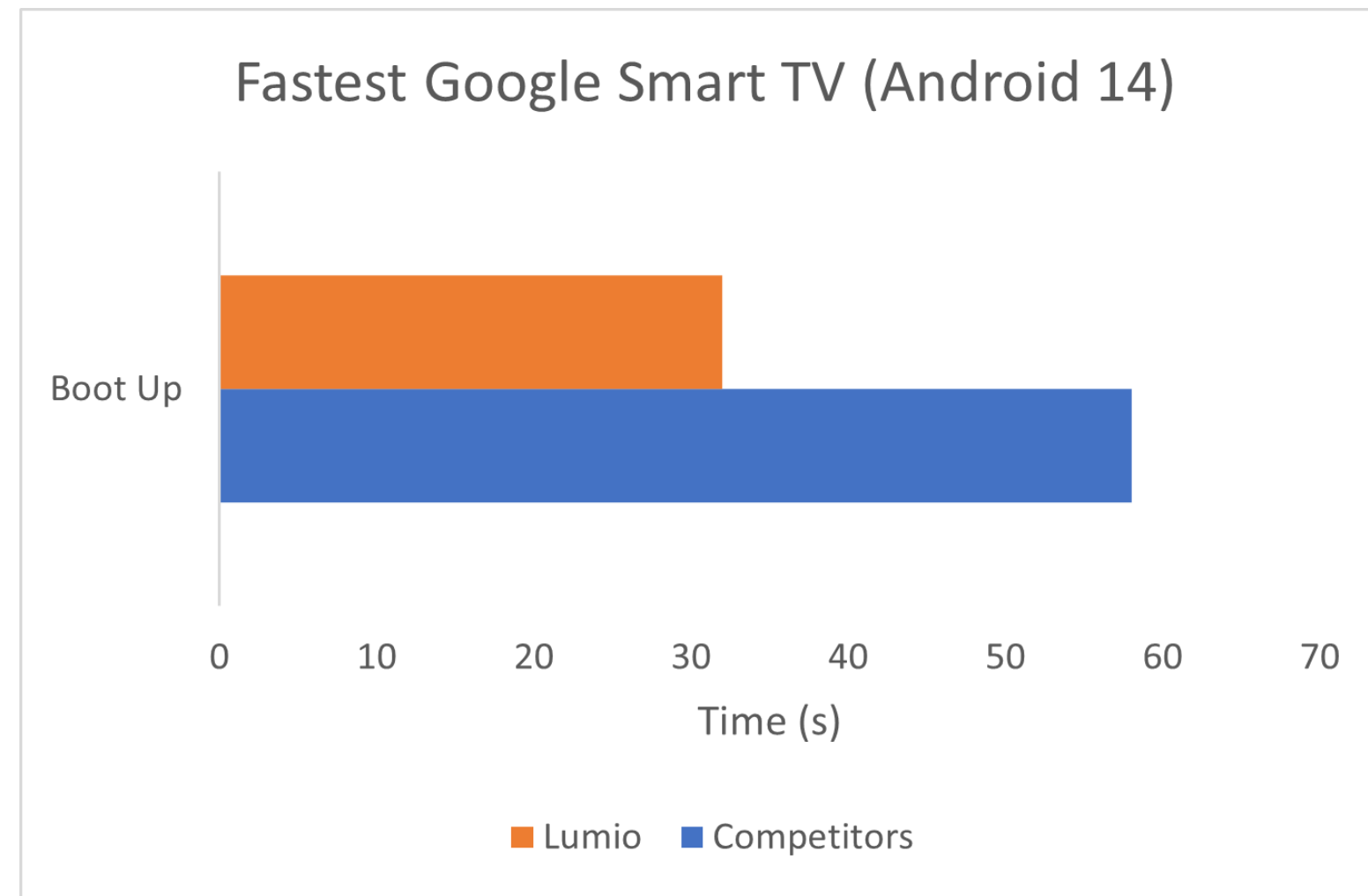
Boot Up Time	Boot up time was defined as the time from triggering ON the main power supply till the TV is ready for interactions.
Using OTT applications	For OTT applications, we chose Netflix, one of the heavies and popular OTT platforms for entertainment. The responsiveness was measured from the moment the 'Open' button was clicked until the Netflix logo and startup audio fully appeared on screen.
Installing apps	In case of app installation, we chose Plex as it is one of the heaviest applications to install on a Smart TV. In this test, the time taken to install the application and be ready for opening was measured.
Scrolling Time	For scrolling test, we chose the system app menu and measured the time taken to scroll from the topmost item in the menu to the last item in the list.
Viewport Frame drop	In case of frame drop, we played YouTube 4K HDR video of Bulgaria 8K HDR 60P by Jacob + Katie on 50-100 mbps internet speed.
Connection Speed	For the connection speed, we played YouTube 4K HDR video of Bulgaria 8K HDR 60P by Jacob + Katie on 50-100 mbps internet speed.

Overall Benchmark



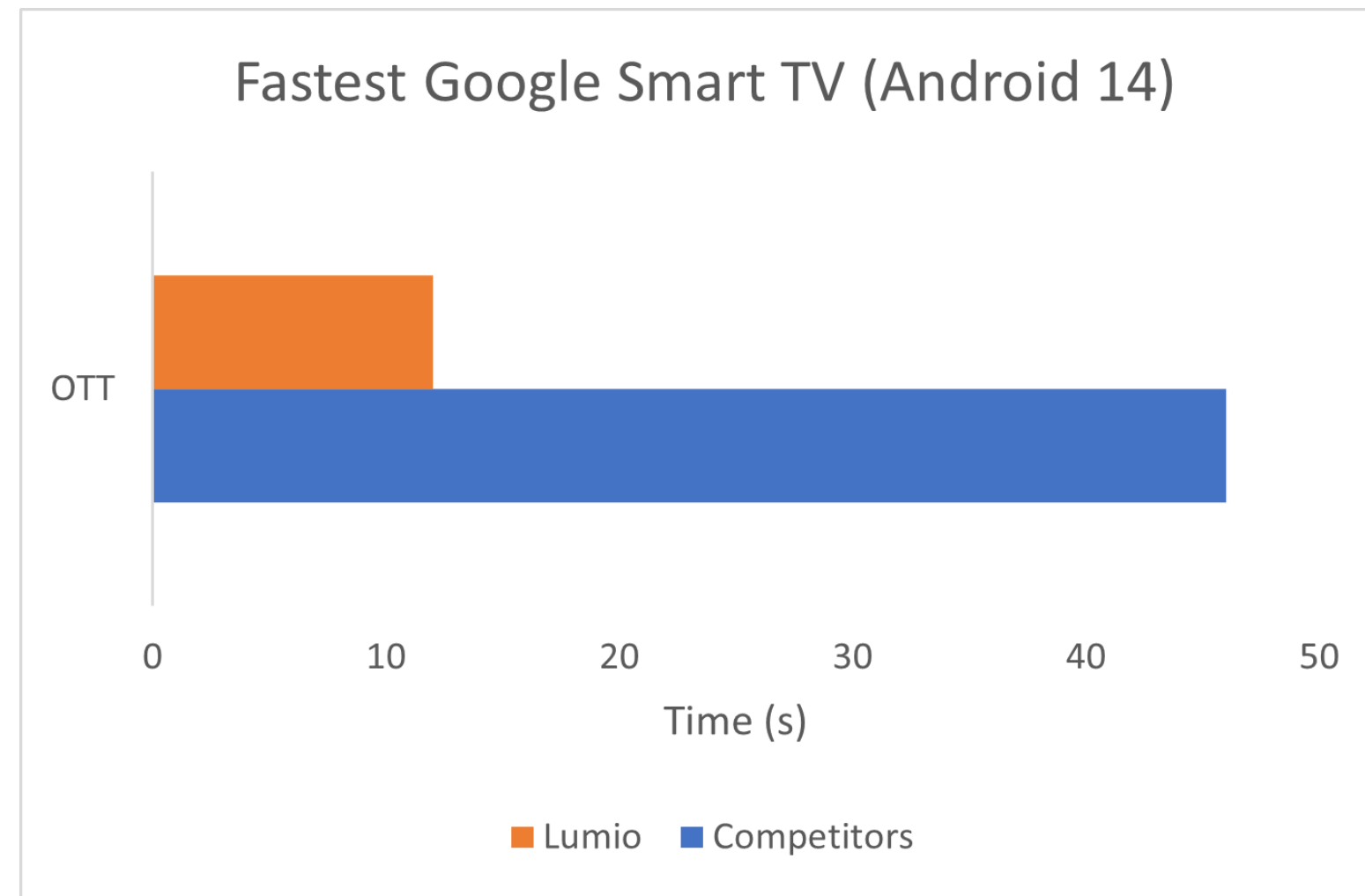
When measured against average technical benchmarks, Lumio delivered the fastest overall performance score. This result underscores Lumio's strong lead in real-world responsiveness across all evaluated brands.

Boot up Benchmark



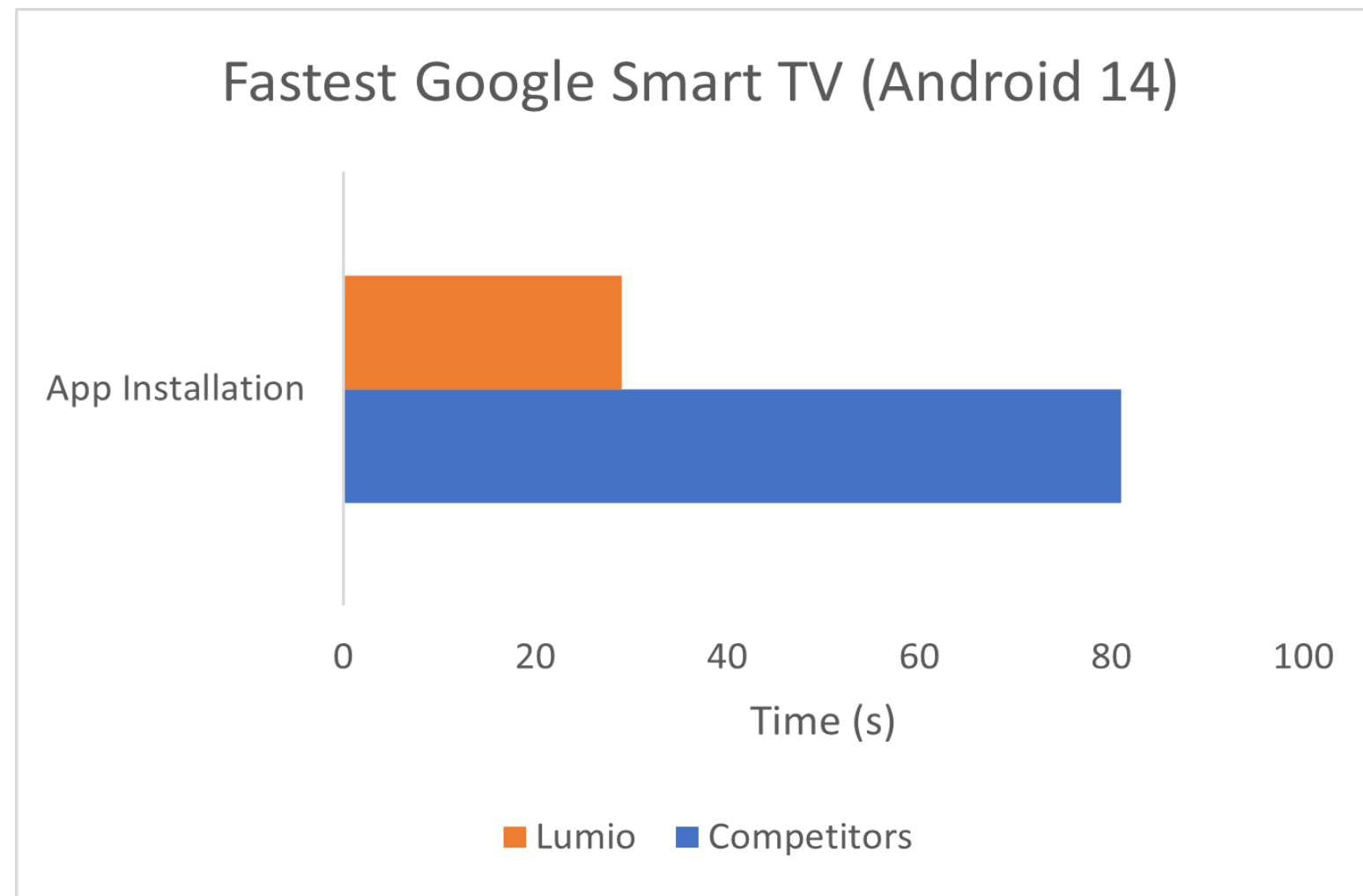
Lumio recorded a boot-up time of 32 seconds, performing less than the overall average of all 23 Smart TV brands evaluated. This places Lumio among the fastest in boot up responsiveness.

OTT Applications Benchmark



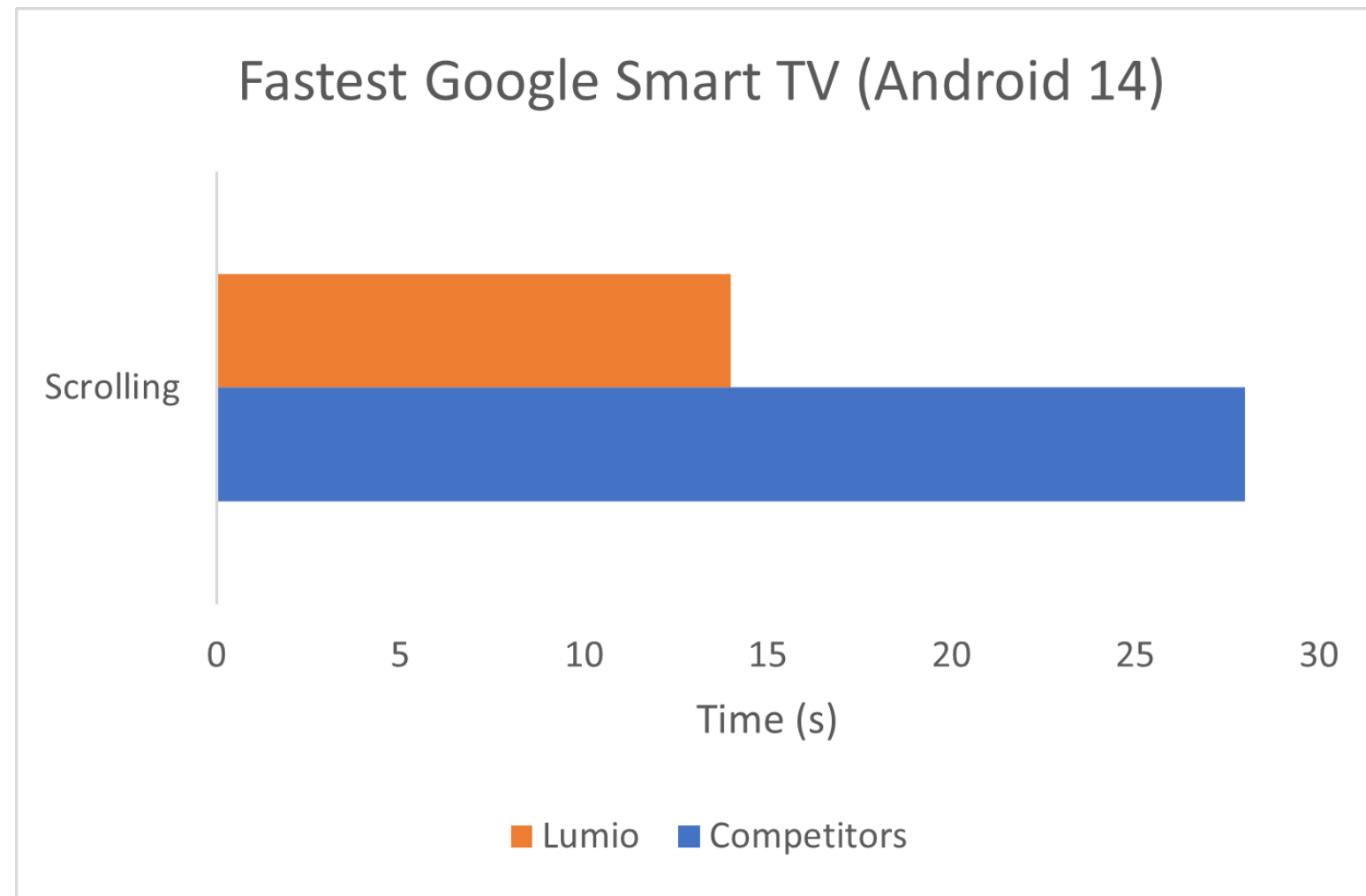
In our OTT (Netflix) Applications benchmark, Lumio achieved a time of 12 seconds, outperforming the average app performance time across all tested brands. This highlights Lumio's strength in OTT app responsiveness.

App Installation Benchmark



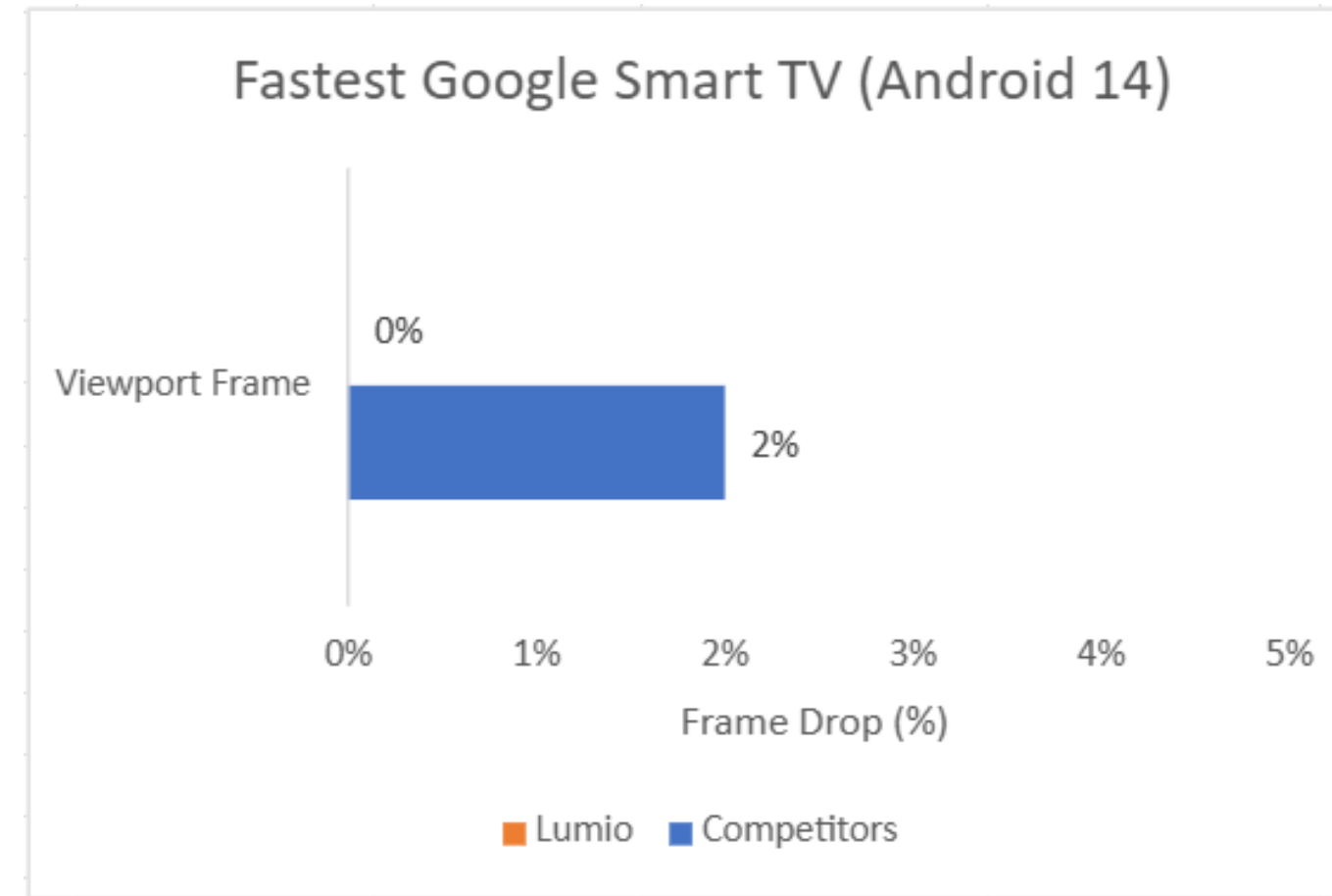
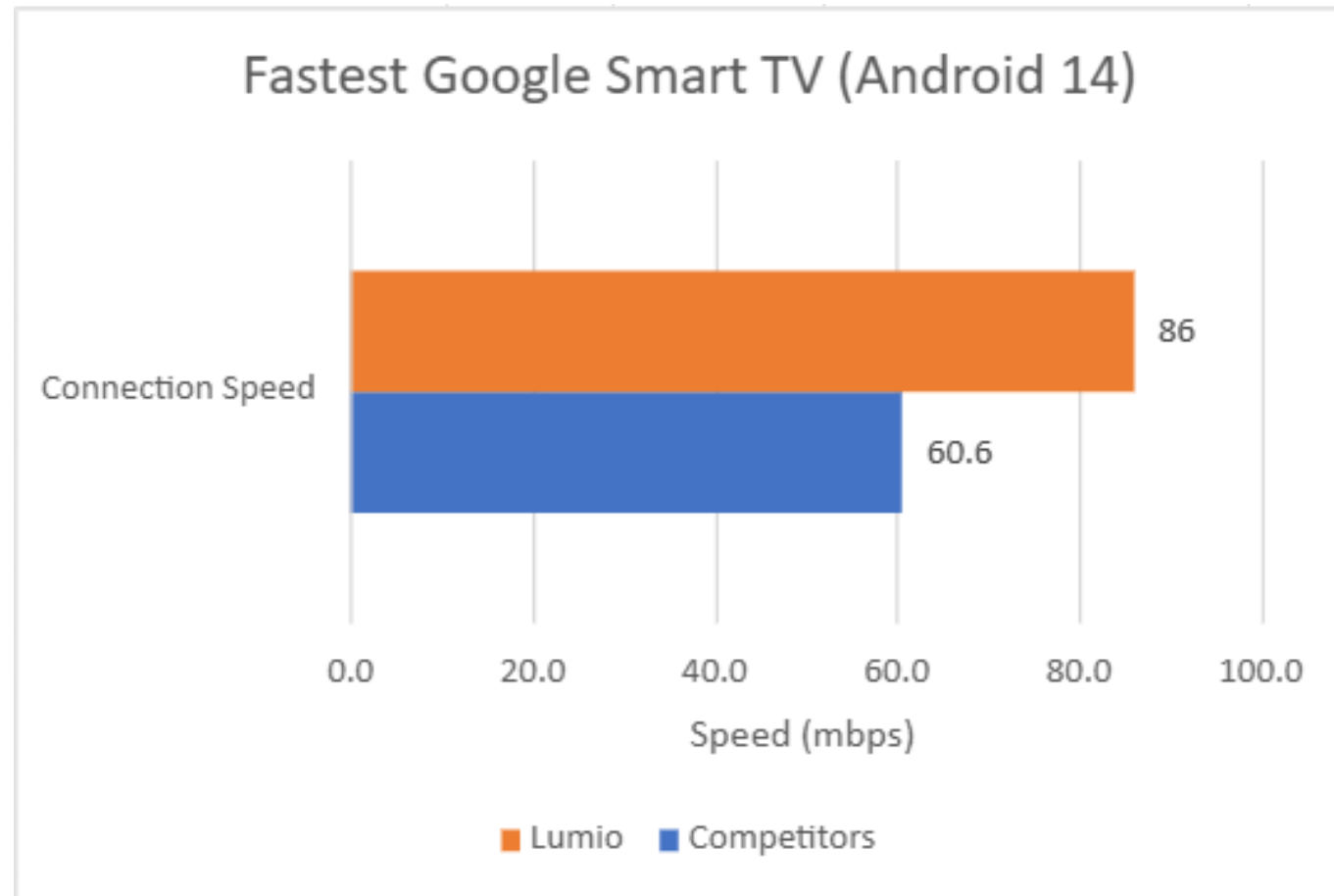
For Plex app installation, Lumio recorded a time of 29 seconds, the fastest among all brands included in the benchmarking. This highlights Lumio's strong performance in app installation efficiency.

Scrolling Speed Benchmark



Lumio achieved the fastest UI scrolling speed of 14, performing better than average scrolling benchmarks in the study. This demonstrates superior navigational smoothness.

Additional Parameters



Smart TV models were additionally tested for connection speed and viewport frame drops using a 4K HDR YouTube benchmark (Bulgaria 8K HDR 60P by Jacob + Katie) on a 50–100 Mbps network. Connection speed was compared to the group average, while frame drops were evaluated against the average frame drop percentage. Lumio outperformed the batch on both Benchmarks, showing faster connectivity and fewer frame drops.

List Of Smart TV Models Covered

Brand	Model
Lumio	Vision 7
Acer	V Pro Series 127
Acer	G Plus Series
Sony	Bravia 2 II
Sony	Bravia KD
Acerpure	SuperSeries 4k UHD
Philips	8100 series
AKAI	PowerView Series QLED
Haier	M92 Series QD-Mini LED
SANSUI	Quantum Pro QLED Series (2025 Edition)
VU	Masterpiece Frame Series 4K QLED TV
Xiaomi	X Pro 75
Sony	BRAVIA 2 S20
Wobble	Z Series
Wobble	K Series
Impex	evoQ
Motorola	ENVISION X
Realme	TechLife
Coocaa	Y74 Pro
BLACK+DECKER	Super Series
BLACK+DECKER	A1 Series
HYUNDAI	Smart Android LED TV
Infinix	Google TV
Thomson	NeoX
TCL	C6K

Brand	Model
Lumio	Vision 9
TCL	C7K
Xiaomi	Smart TV A
Xiaomi	Smart TV A Pro
Xiaomi	Smart TV X Pro
Acerpure	Nitro QLED 4K UHD
Acer	Ultra I Series 4K UHD
Acer	Pro Series
Acer	Super Series
Acer	L Series
Haier	S90 Series
Philips	8300 series
Philips	QLED Smart QD-Mini LED
SANSUI	140cm (55) 4K QLED Google TV
SANSUI	SANSUI 50 inch Google TV 4K
Sony	BRAVIA 2 4K Ultra HD Smart LED
Wobble	X Series
Acerpure	Aspire Neo Series
VZY	VZY-X32HDLG5
Arrqw	ARRQW RO-43LPS
Vise	ALLM
SANSUI	109 cm (43) Full HD QLED Smart Google TV
SANSUI	80cm (32) Google TV with QLED Display
Onida	NexG Series
Wobble	Q1 Series

24

Smart TV brands

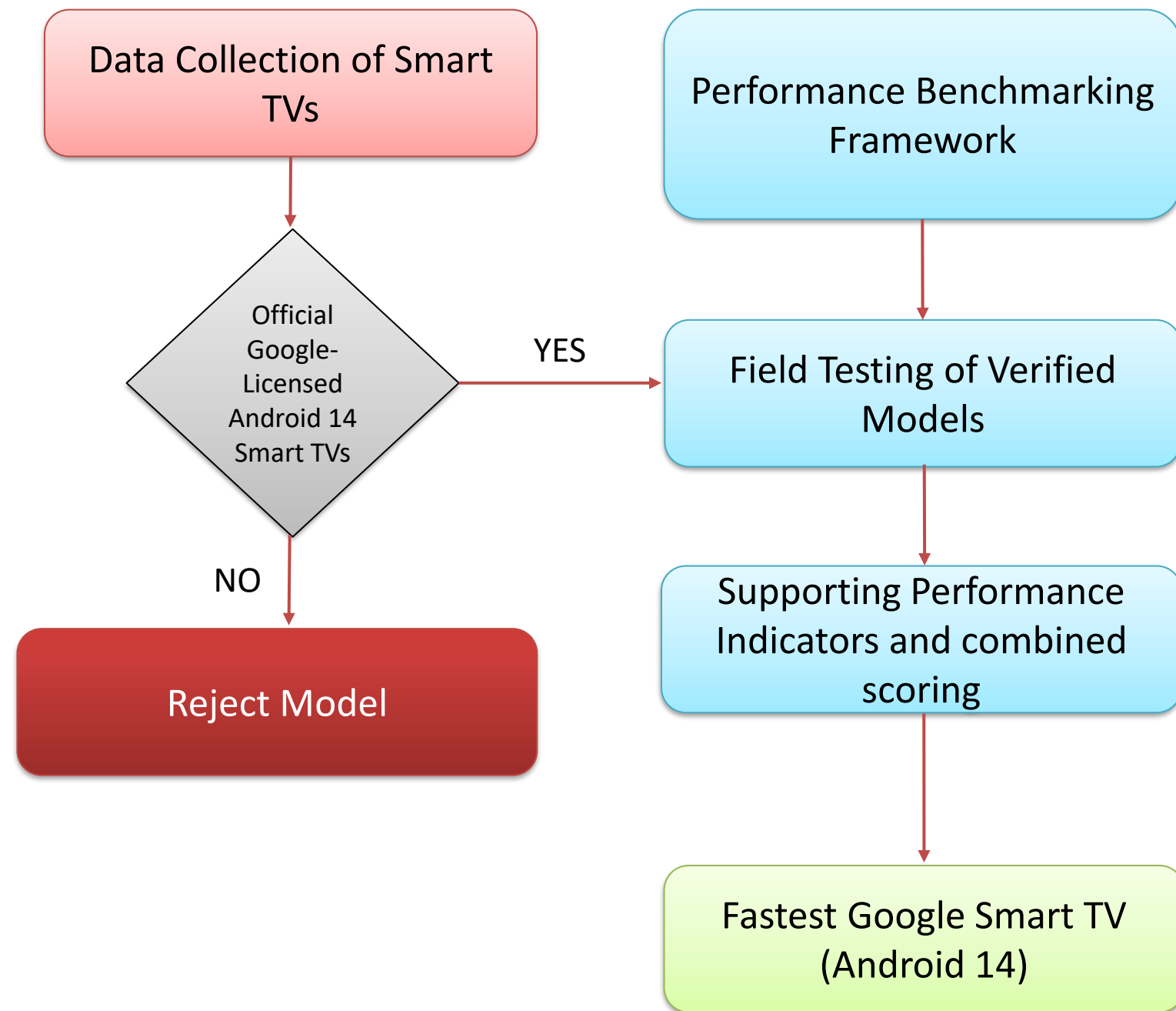
51

Smart TV models

Key Takeaways

- The performance benchmarking framework of Lumio Google Smart TVs against the 51 top-selling Smart TVs running Google TV Android 14 OS, shows that Lumio TVs deliver significantly faster speed and responsiveness than competing models.
- These results not only validate Lumio's performance claims but also position it as India's fastest Smart TV brand.
- The new Smart TV range is expected to greatly improve the user experience, especially for viewers who consider slow responsiveness among the top three issues affecting their overall satisfaction with Smart TVs.

Methodology



Thank You!

Techarc is a premier technology market research, data analytics and consulting firm in India. Primarily operating in consumer tech, auto tech and ecom / d2h domains, it serves leading companies in the respective sectors by supporting in decision making and bolstering data driven influence on stakeholders. Techarc verifies and validates technology prowess of all leading OEMs and ecosystem partners. Its benchmarking service 'TechMark' helps OEMs to stand out from the rest. Techarc's research is widely cited in leading technology and mainstream media. Its cumulative social media presence has crossed 50,000 followers and it delivers a weekly newsletter (TW@TA) to over 75,000 subscribers.

www.techarc.net

